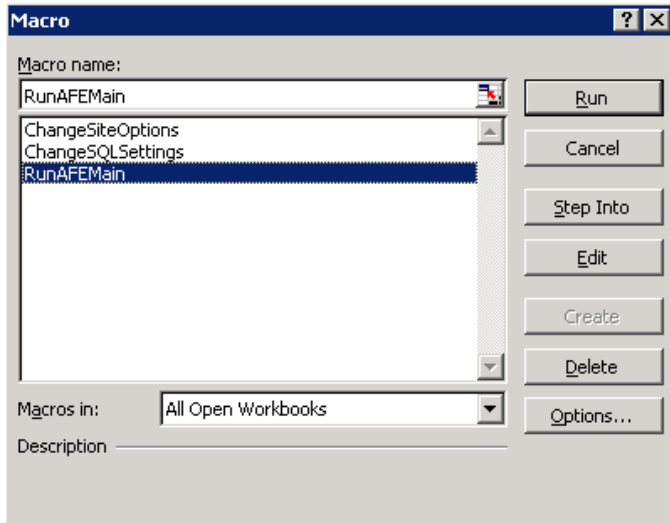


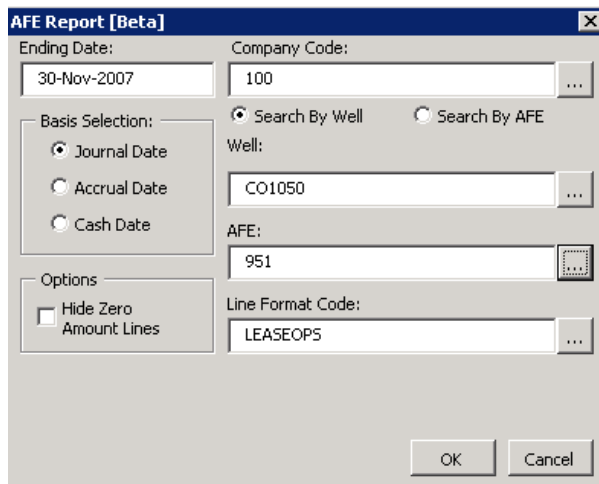
## Authorization for Expenditure Report (2nd AFE Report.XLS)

This report requires that the database have the AFE module active. AFE's must be used during data entry for the report to show any detail. The Line Format Maintenance in OGwin will be utilized for formatting the columns of the report.

Click Tools – Macro – Macros to receive the Macro selection screen. If the SQL settings and Options have been set up on another SQL report and this report is in the same folder, then those two options will not be run. Click the RunAFEMain and click Run.



The AFE Report setup screen will appear.

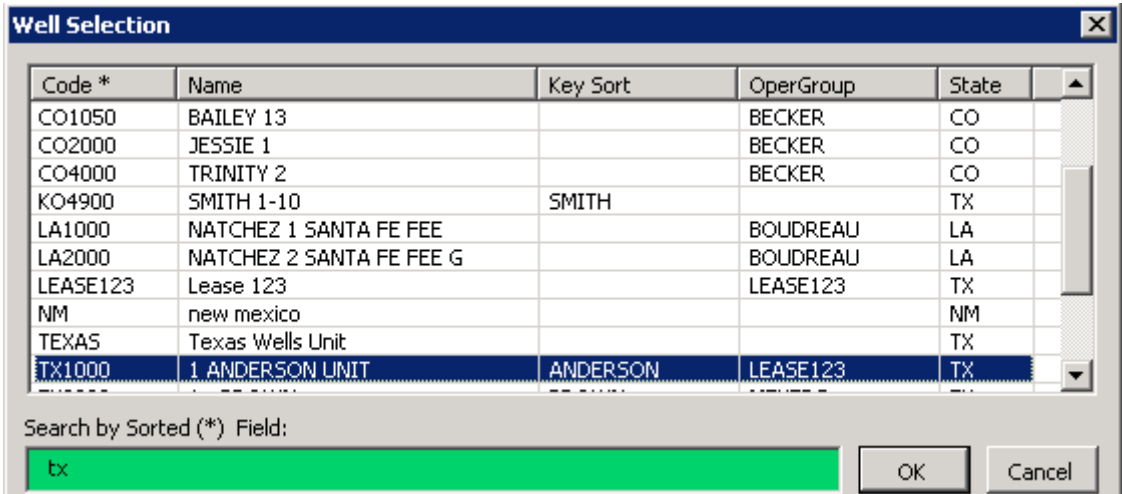


**Ending Date:** Enter in mm/dd/yyyy format. This should be the last day to include in the report

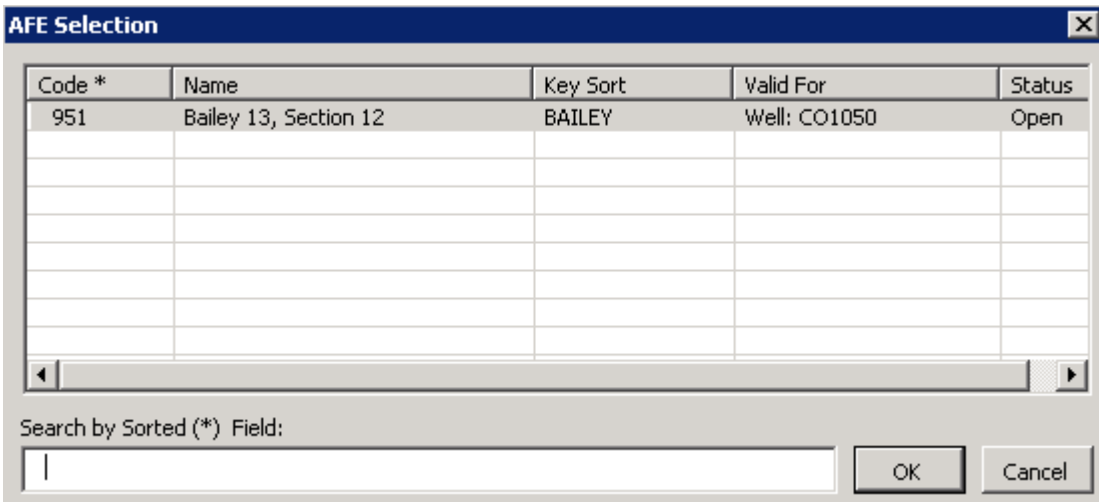
**Company Code:** Click the scan button to select or type in the company code

**Search By:** Choose Well or AFE. This will be the search method. If Well is selected, the well code will need to be chosen before the AFE code. If AFE is selected, the AFE code will be selected first and then the well code will be chosen.

**Well:** Enter the Well code or click the scan button to choose a well code. The search screen will also include a search by sorted field option. This option allows the user to type in a code based on which column has the asterisk (\*) (the sorted column). As the code is entered, the search screen will automatically scan to the first sorted field(see below).



**AFE:** Enter the AFE code or click the scan button to choose an AFE code. The search screen will also include a search by sorted field option. This option allows the user to type in a code based on which column has the asterisk (\*) (the sorted column). As the code is entered, the search screen will automatically scan to the first sorted field(see below).



**Line Format Code:** This report relies on the OGWin Line format codes. Click the scan button to select a line format from the database.

**Basis Selection:** Choose Journal, Accrual or Cash basis. This will decide which date will be used to determine which transactions will be included in the report.

**Hide Zero Lines:** Checked will hide all lines on the report that total to zero. Otherwise, all lines will be shown.

Below is an example of the report. Visually it will be different per user based on the line format code chosen during report setup.

B	C	D	E	F	G	H	I	J	K	L	M
2	Date and Time Run		20-Nov-07	10:22:02				Requested By:			
3	Report Effective Date		30-Nov-07					Company Code and Name	100 - OIL & GAS INTERNATIONAL, INC.		
4	Accounting Basis:		Journal								
5			AFE Report								
6			Actual vs. Budget Comparison								
7			WELL Code and Name:	CO1050 - BAILEY 13							
8			AFE Code and Name:	951 - Bailey 13, Section 12							
9											
10	Description		Actual	Budget	Amount	Percentage					
11			Balance	Amount	Over/(Under)	Over/(Under)					
12			30-Nov-07	Budget	Budget						
13	AFE Expenses										
14	*Intangible Drilling Costs*										
15	Location Building		\$0.00	\$1,000,000.00	(\$1,000,000.00)	-100.0%					
16	Drilling - Footage		\$0.00	\$1,000,000.00	(\$1,000,000.00)	-100.0%					
17	Drilling - Daywork		\$0.00	\$350,000.00	(\$350,000.00)	-100.0%					
18	Drilling Supervision		\$0.00	\$350,000.00	(\$350,000.00)	-100.0%					
19	Drilling - Mud		\$0.00	\$350,000.00	(\$350,000.00)	-100.0%					
20	Repairs		\$0.00	\$350,000.00	(\$350,000.00)	-100.0%					
21	Open Hole Logs		\$0.00	\$25,000.00	(\$25,000.00)	-100.0%					
22	Other Drilling Costs		\$0.00	\$25,000.00	(\$25,000.00)	-100.0%					

This report also has a Drill Down feature. Select a cell and right click on the cell. A menu will appear. The first selection on the menu will be Drill down. Left click on the option.

8	CAPITALIZED INTANGIBLE COST			\$0.00	\$2,528,906.25	(\$2,528,906.25)	-100.0%				
9	FURNITURE AND FIXTURES			\$0.00	\$0.00						
0	ACCU DEPR-FURN & FIXTURES			\$0.00	\$0.00						
1	LEASEHOLD IMPROVEMENTS			\$0.00	\$0.00						
2	ACCU AMORT LEASEHOLD IMPROV			\$0.00	\$0.00						

This will open the second tab on the report populated with all of the detail lines that make up the total select.

B	C	D	E	F	G	H	I	J	K	L	M	N	
1	Sub_Account	Voucher	Journal_Date	Accrual_Date	Cash_Date	Description	Well_Code	Entity_Code	Entity_Name	Gross_Volume	Gross_Value	Net_Volume	Net_Value
2	5					Balance Forward							\$0.00
3	1	483	8/1/2005		8/1/2005		CO1050			\$0.00	\$10,000.00	\$0.00	\$2,500.00
4	2	483	8/1/2005		8/1/2005		CO1050			\$0.00	\$9,000.00	\$0.00	\$2,250.00
5	3	483	8/1/2005		8/1/2005		CO1050			\$0.00	\$8,000.00	\$0.00	\$2,000.00
6	4	483	8/1/2005		8/1/2005		CO1050			\$0.00	\$9,500.00	\$0.00	\$2,375.00
7	5	483	8/1/2005		8/1/2005		CO1050			\$0.00	\$6,000.00	\$0.00	\$1,500.00
8	6	483	8/1/2005		8/1/2005		CO1050			\$0.00	\$5,000.00	\$0.00	\$1,250.00
9	7	483	8/1/2005		8/1/2005		CO1050			\$0.00	\$5,500.00	\$0.00	\$1,375.00
10	8	483	8/1/2005		8/1/2005		CO1050			\$0.00	\$250.00	\$0.00	\$62.50
11	9	483	8/1/2005		8/1/2005		CO1050			\$0.00	\$1,000.00	\$0.00	\$250.00
12	10	483	8/1/2005		8/1/2005		CO1050			\$0.00	\$20,000.00	\$0.00	\$5,000.00
13	11	483	8/1/2005		8/1/2005		CO1050			\$0.00	\$2,000.00	\$0.00	\$500.00
14	12	483	8/1/2005		8/1/2005		CO1050			\$0.00	\$1,500.00	\$0.00	\$375.00
15	13	483	8/1/2005		8/1/2005		CO1050			\$0.00	\$5,000.00	\$0.00	\$1,250.00
16	14	483	8/1/2005		8/1/2005		CO1050			\$0.00	\$2,100.00	\$0.00	\$525.00
17	15	483	8/1/2005		8/1/2005		CO1050			\$0.00	\$1,000.00	\$0.00	\$250.00
18	16	483	8/1/2005		8/1/2005		CO1050			\$0.00	\$1,000.00	\$0.00	\$250.00
19	17	483	8/1/2005		8/1/2005		CO1050			\$0.00	\$1,000.00	\$0.00	\$250.00