



**SQL Excel Report Library
Setup and Utilization**

Table of Contents

Introduction.....	3
Exporting Data to SQL	3
Downloading the SQL Reports.....	5
SQL Settings Configuration.....	6
Site Options Configuration:	7
Running the Reports	8
Drill Down.....	8
Chart	9
Troubleshooting.....	10

Introduction

SQL Excel Reports are Excel documents that OGSYS has developed with specialized user friendly macros designed to produce SQL reports. Macros are a series of instructions that will query a designated SQL database. This database is the same one created when the Export to SQL option is run in OGwin.

Once the initial Macro is run, then the resulting figures can be “drilled down” to display the details that comprise the totals shown. Additionally, some reports have a chart tab that can be utilized to create charts of the data displayed.

SQL Reports for OGWin are exclusively written for the 1.8 (SQL) or later versions of the database. These reports are not compatible with the older 1.7 (QDB) version. If you need to upgrade, please contact support@ogsys.com.

Many of the SQL Excel Reports utilize the line and column format designs setup in the OGwin system. This allows the user to have one place to design reports thus minimizing training. By doing this we combine the power of the OGwin Report Writer with the speed and drill down capability of SQL.

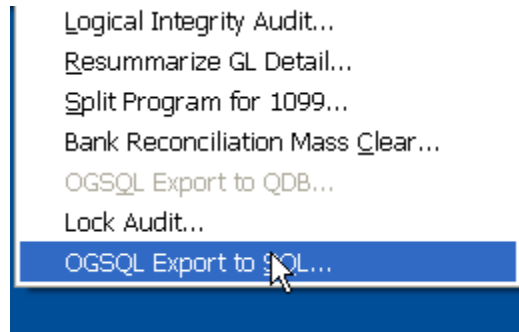
The SQL Excel Reports depend on an Excel Add-In named OGSQlai.xla. This file must be in the same folder as the individual reports for the reports to work properly. OGSQlai.xla may be downloaded from <http://www.ogsys.com/sqlreports.html>. Once downloaded, OGSQlai.xla is configured using macros available in any SQL Excel Reports. (Caution: Sometimes the OGSQlai.xla file is renamed as OGSQlai.xls during the download process. Be sure to rename the file to OGSQlai.xla when the download is completed.)

Basically, before using the SQL Excel Reports, the OGwin data must be exported to SQL. Once that is complete, OGSQlai.xla is configured to look at the database that was exported. Finally, the Excel report macro is run. OGwin Data can be re-exported to the same SQL data at any time allowing the user to create up-to-date reports.

Exporting Data to SQL

The SQL server database must be created before running the SQL export procedure. This is done in the SQL Server software by running the query command “CREATE DATABASE <Database_Name>”(replace <database_name> with the name of the database to create). In order to maximize speed in the export process, the workstation that runs the SQL Export cannot be used for other tasks while it is exporting. The OGwin database used for the export can be in use by other workstations, but do not attempt to export data when major batch processing is occurring, such as a General Ledger Close (or final post). Although the export would work, it would not be useful as it would be a snapshot of a half closed database.

- ❖ Start OGWin, log into the desired system and select Process> Exceptional Processing> OGSQ Export to SQL. Please note that there is an older version (to maintain backward compatibility) called OGSQ Export QDB that should not be run. It is recommended that you disable the older version (in Supervisor-User & Group Maintenance-User & Group Access) to prevent accidental execution.



- ❖ Once you have the module loaded, please fill out the form as follows:
 - SQL Server Name - The name of your SQL Server
 - Catalogue Name - The name of the SQL Database
 - Authentication - Ignore unless there is a user name and password for the SQL database
 - Module Selection - Select "Only These Modules", then select every available module **except** "System Control"

You may choose to save this form as a macro. This will allow users to load the macro, rather than key in this information each time. Click the OK button and submit the report. When the export is complete, examine the report for any errors (the last line of the export will contain a total error count). If you encounter any errors, please check the Troubleshooting Section below before contacting Support.

 A screenshot of a dialog box titled "Convert OGWIN to OGSQ". It contains a "Macro" section with a "Name:" dropdown, "Load", "Save...", and "Delete" buttons, and "OK", "Cancel", and "Help" buttons. Below is a table with the following data:

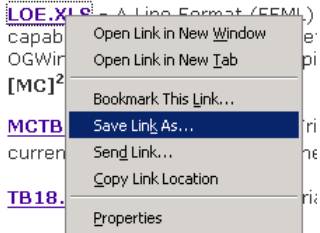
Field	Value
SQL Server Name	
Catalogue Name	
Authentication	<input checked="" type="checkbox"/> SQL User = " Password = <HIDDEN>
Module Selection	<input checked="" type="checkbox"/> All

Downloading the SQL Reports

Excel Reporting Examples are included in the OGWin SQL Package. The sample reports connect to the SQL database and retrieve data from the SQL database to populate the XLS reports. Currently available are a Trial Balance report with Drill Down capabilities, LOE, JADE and AFE reports.

The reports can be downloaded from our website: <http://www.ogsys.com/sqlreports.html> Right click on the reports and choose Save Link As :

Date" refers to the JE's Cash Date



Notes:

Sometimes just clicking the link will give you the option of saving or opening. All the reports should be saved to the same folder. Keep an eye on this website for new reports as they are released.

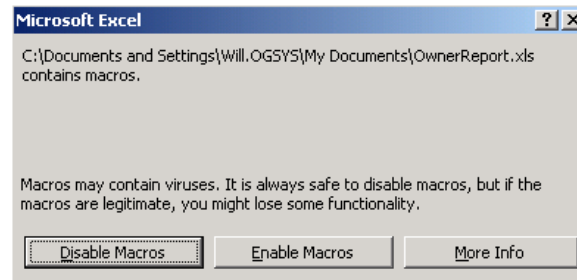
It is also required that the OGSQlai.xla file be saved to the same folder. This file is required in order for any of the reports to work properly.

Attention Internet Explorer Users: There appears to be a bug in IE where this file will be saved with an *.XLS extension instead of the *.XLA extension. If this occurs, rename the file to OGSQlai.XLA.

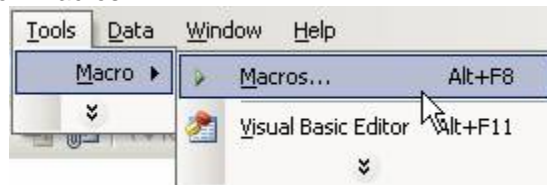
SQL Settings Configuration

The SQL Excel Reports will need to be modified to match the local SQL server. Use the following steps to walk through the process. Excel must be set to a macro security level of "Medium" (they will not run if the level is set to "High"). Medium security will prompt users for approval before enabling any macro. All report functions can be reached from the Excel menu: Tools - Macro - Macros...

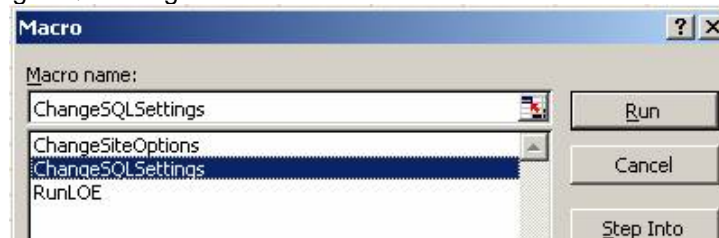
1. Open one of the SQL Excel reports. Acknowledge the macro warning by selecting the "Enable Macros" button. The macros on the website are virus free.



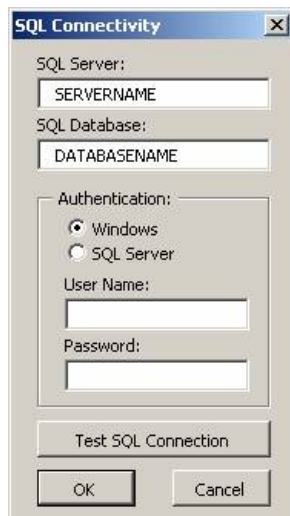
2. Click Tools->Macro->Macros



3. Select ChangeSQLSettings and click Run.



4. Enter your SQL server name and SQL database name. These are the same names created in the "Export to SQL" section of these instructions.

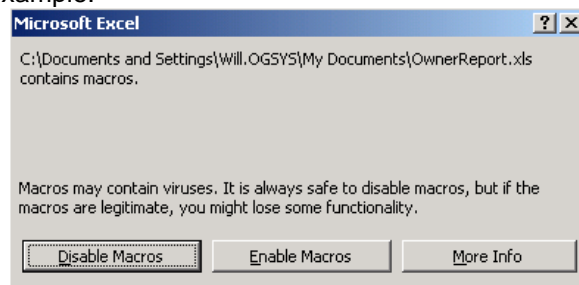


5. Click "Test Connection"
6. Once the Connection is successfully tested, click OK to save the contents to the add-in. This will change the settings for all Generation 2 reports looking at this copy of OGSQlai.xla.

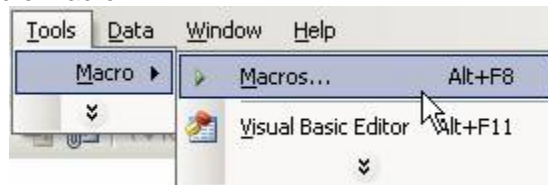
Site Options Configuration:

Configuring the Site Options Settings tells the OGSQlai.xla add-in what database options are applicable to your OGWin installation. This allows Generation 2 reports to properly query the database. NOTES: *This does not affect the options maintained in OGWin itself. If your options differ between OGWin and the add-in, Generation 2 reports may not operate properly*

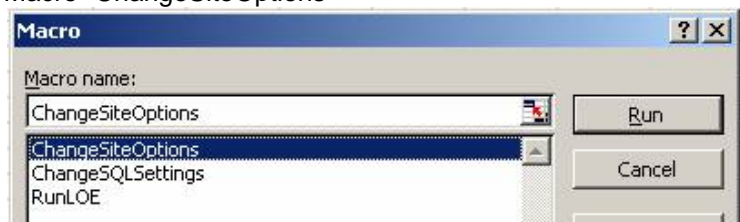
1. Open any site specific Generation SQL Report (Enable Macros if prompted). LOE.xls will be used for this example.



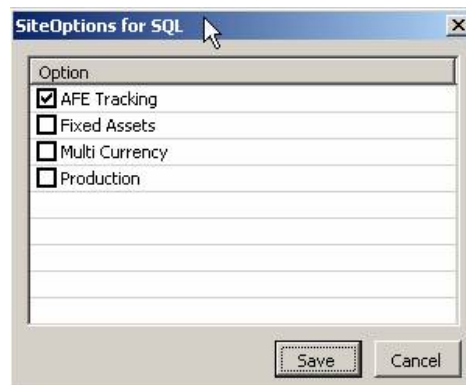
2. Click Tools->Macro Macro



3. Run the Macro "ChangeSiteOptions"



4. Select and/or De-select the options listed to match your OGWin options.

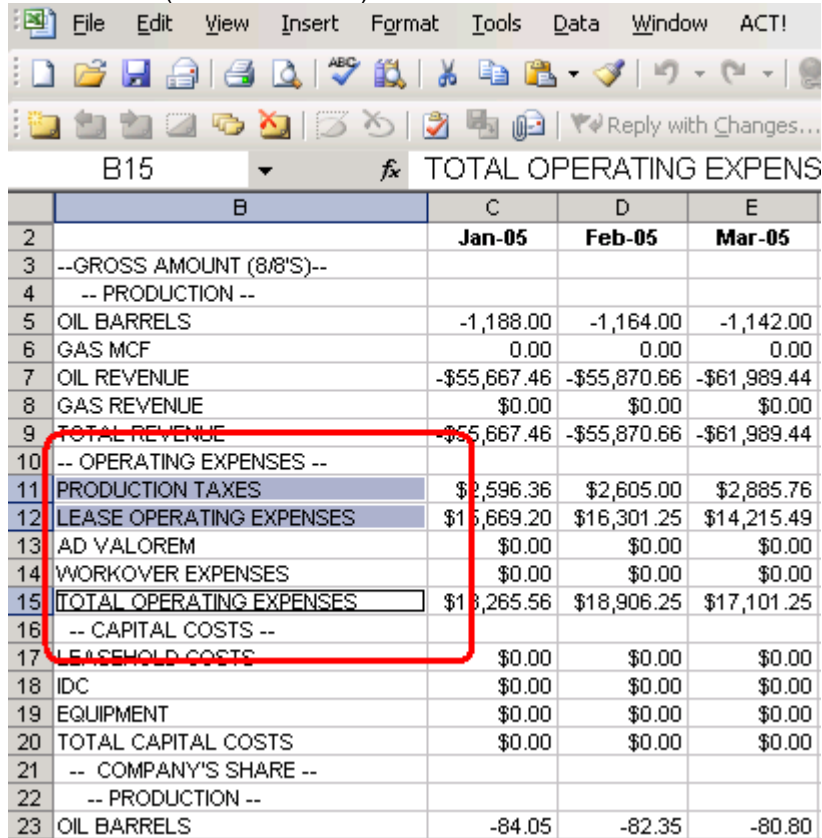


5. Click Save to apply the selections to the add-in. This will change the settings for all Generation 2 reports looking at this copy of OGSQlai.xla.

Chart

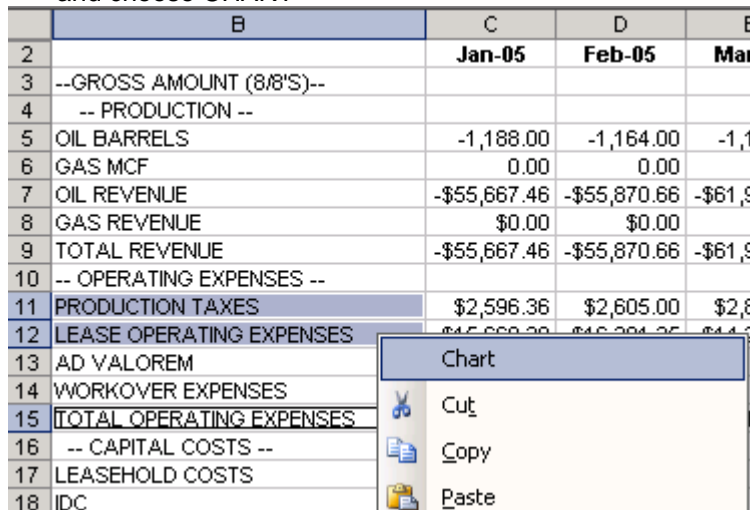
On some reports, there is a tab for Charting the figures found on the main tab. This will create a bar chart of the data contained on the row(s). Not all reports have a chart function available.

- Right click the description of the row for one or more rows to include in the chart. DO NOT DRAG ACROSS CELLS. To select multiple lines, hold the control (ctrl) key down and click each cell separately. This ONLY works if the description column is selected (column B below)



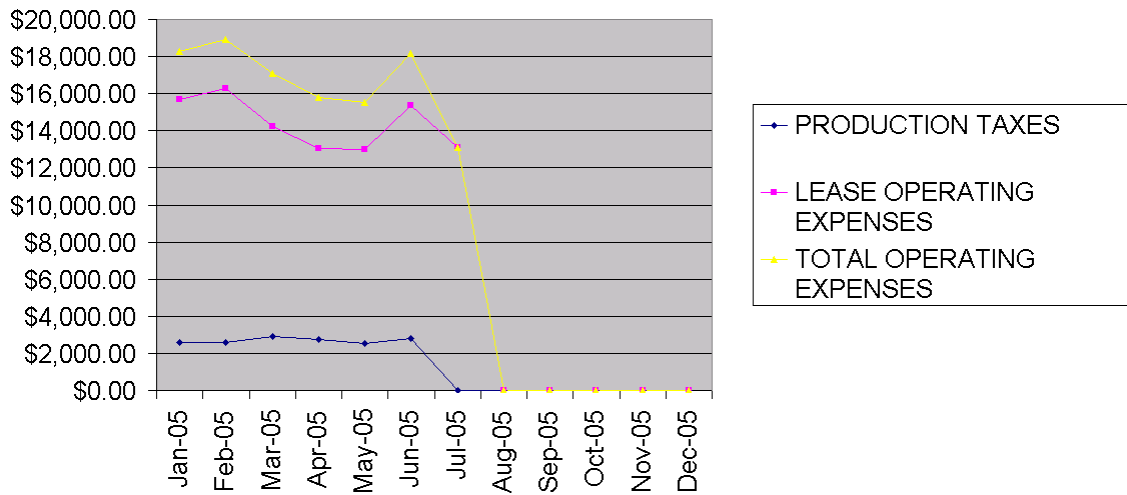
	B	C	D	E
		Jan-05	Feb-05	Mar-05
2				
3	--GROSS AMOUNT (8/8'S)--			
4	-- PRODUCTION --			
5	OIL BARRELS	-1,188.00	-1,164.00	-1,142.00
6	GAS MCF	0.00	0.00	0.00
7	OIL REVENUE	-\$55,667.46	-\$55,870.66	-\$61,989.44
8	GAS REVENUE	\$0.00	\$0.00	\$0.00
9	TOTAL REVENUE	-\$55,667.46	-\$55,870.66	-\$61,989.44
10	-- OPERATING EXPENSES --			
11	PRODUCTION TAXES	\$2,596.36	\$2,605.00	\$2,885.76
12	LEASE OPERATING EXPENSES	\$13,669.20	\$16,301.25	\$14,215.49
13	AD VALOREM	\$0.00	\$0.00	\$0.00
14	WORKOVER EXPENSES	\$0.00	\$0.00	\$0.00
15	TOTAL OPERATING EXPENSES	\$18,265.56	\$18,906.25	\$17,101.25
16	-- CAPITAL COSTS --			
17	LEASEHOLD COSTS	\$0.00	\$0.00	\$0.00
18	IDC	\$0.00	\$0.00	\$0.00
19	EQUIPMENT	\$0.00	\$0.00	\$0.00
20	TOTAL CAPITAL COSTS	\$0.00	\$0.00	\$0.00
21	-- COMPANY'S SHARE --			
22	-- PRODUCTION --			
23	OIL BARRELS	-84.05	-82.35	-80.80

- Once all cells needed for graph are selected, right Click on one of the selected cells and choose CHART



	B	C	D	E
		Jan-05	Feb-05	Mar-05
2				
3	--GROSS AMOUNT (8/8'S)--			
4	-- PRODUCTION --			
5	OIL BARRELS	-1,188.00	-1,164.00	-1,142.00
6	GAS MCF	0.00	0.00	0.00
7	OIL REVENUE	-\$55,667.46	-\$55,870.66	-\$61,989.44
8	GAS REVENUE	\$0.00	\$0.00	\$0.00
9	TOTAL REVENUE	-\$55,667.46	-\$55,870.66	-\$61,989.44
10	-- OPERATING EXPENSES --			
11	PRODUCTION TAXES	\$2,596.36	\$2,605.00	\$2,885.76
12	LEASE OPERATING EXPENSES	\$13,669.20	\$16,301.25	\$14,215.49
13	AD VALOREM	\$0.00	\$0.00	\$0.00
14	WORKOVER EXPENSES	\$0.00	\$0.00	\$0.00
15	TOTAL OPERATING EXPENSES	\$18,265.56	\$18,906.25	\$17,101.25
16	-- CAPITAL COSTS --			
17	LEASEHOLD COSTS	\$0.00	\$0.00	\$0.00
18	IDC	\$0.00	\$0.00	\$0.00

3. The system will display the Chart Tab with a complete line graph of the rows selected.



Troubleshooting

The following is a list of potential solutions to common problems experienced with the SQL module:

P: *"Login to Server 'xxx' Failed" appears in the Export Log*

S: Ensure you have the SQL Server name (or Instance Name) correct.

S: Ensure the Authentication mode you have selected is appropriate for your environment.

S: Ensure that you have rights to connect to the SQL Server.

S: Ensure that you can connect to the SQL Server using a Microsoft Based utility such as Query Analyzer, Enterprise Manager, and OSQL. If a Microsoft utility cannot connect, then OGWin is not the likely culprit.

P: *"Could not Insert Duplicate..." appears in the Export Log.*

S: Run a Trial Logical Integrity Audit [LIA]. If the audit reveals any errors, please contact Support *before* running the Final LIA. The Final LIA will irrevocably alter your OGWin database and should only be performed after consulting Support.

P: *I have contacted support and run the Final LIA and I still receive "Could not Insert Duplicate..." in the export log.*

S: While rare, this error can occur. Please contact Support with the Export Log and the issue will be investigated and corrected.

P: I receive messages in the Export Log about insufficient rights to a particular object or task.

S: These errors are almost always accurate. Please ensure that you have Administrator rights to the database when exporting. The export process:
Truncates, Drops, Creates and Alters tables, views and procedures.
Inserts to and Updates tables
Executes Stored Procedures
Issues Database Console Commands (DBCC)

P: I receive errors relating to the Transaction Log

S: Ensure that there is sufficient space on the server to perform the export.

P: The Transaction Log is oversized (significantly larger than the data itself).

S: Follow these steps to truncate the Transaction Log:

1. Ensure everyone is out of the SQL Database
2. Open SQL Query Analyzer and connect to the database in question as a user with administrative rights.
3. Issue "DBCC SHRINKFILE(MyDatabase_Log,1)
4. The Transaction Log should have shrunk to 1MB