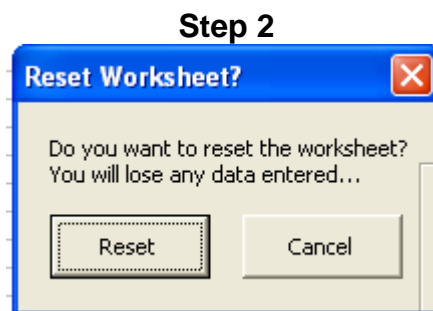
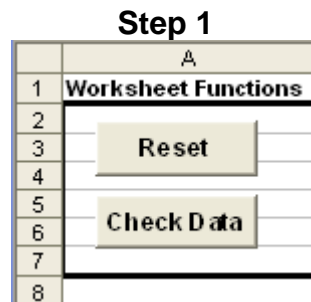


Directions For the Revenue Suspense SQL Upload Spreadsheet

Through the **Import Data from ASCII-File** module, **OGSQL** gives users the ability to import **Revenue Suspense** data from a text file. The **Revenue Suspense Upload** macro is designed to assist with the preparation of the necessary text file.

Steps to follow:

- If necessary, reset the spreadsheet:



- Populate columns B through AQ with the appropriate data:

Company Code

Owner Code

Well Code

Unique Code - (When importing, this number will be used only to distinguish between rows in your import file)

Currency Code

Payment Status – Suspend (default)

Interest Type

Decimal Interest

Product Code

Production Year

Production Month

Gross 88ths Volume

Net Volume

Gross 88ths Value

Net Value

Gross 88ths Tax 1

Net Tax 1

Generated Method Tax 1 - **SHARE** - generate tax per company share

Allow: 'ALL ' - generated 100% of tax

Allow: 'NONE ' - did not generate tax

Default: 'NONE '

Gross 88ths Tax 2

Net Tax 2

Generated Method Tax 2

Gross 88ths Tax 3

Net Tax 3

Generated Method Tax 3

Gross 88ths Tax 4

Net Tax 4

Generated Method Tax 4

Gross 88ths Other Deductions 1

Net Other Deductions 1

Gross 88ths Other Deductions 2

Net Other Deductions 2

Duplicate Gross – (Y,N are the gross amts herein duplicated
on another Owner Revenue detail line)

Next Payment – (Nonzero if there is a pending partial-payment)

Accrual Year for 1099 - **What calendar year was revenue accrued into**

Allow: 0 -> not accrued, Allow: 1900-2075 of this amount)

Revenue Deck Code

Statement Status

Tax Report Pending

Memo Company Code

Purchaser Code

Purchaser Receipt ID

Paid Amount

Pending Suspense Category

- Click the **Check Data** button:

	A
1	Worksheet Functions
2	
3	Reset
4	
5	Check Data
6	
7	
8	

The data you have entered will be checked for errors. If a large number of rows have been entered, this may take some time. Please be patient.

If errors are discovered in the data, you will see a notification that lists the row number and the error detected:



Errors will be marked on the spreadsheet in red:

0	MINERALS MANAGEMENT SERVICE 77614	BRASS
1	JOAN CHORNEY	555 17TH
2	USA WYW-100185	

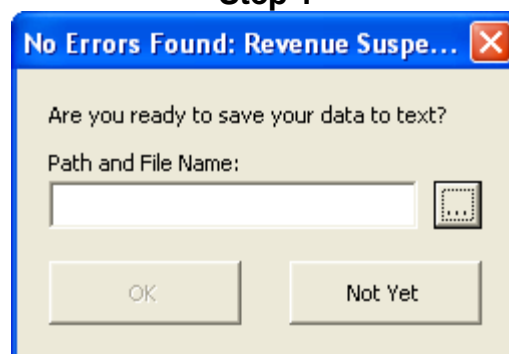
If you hover over the cell with your mouse, you will see a comment with more detailed information on the error:

1000	MINERALS MANAGEMENT SERVICE 77614	BRASS	1000
1001	JOAN CHORNEY	555 17TH	
1002	USA WYW-100185		
1003	LULANDER ENERGY COMPANY	17	SUITE 472
1004	WESTER OIL RESOURCES, INC.	4200 N. BECOS STREET	

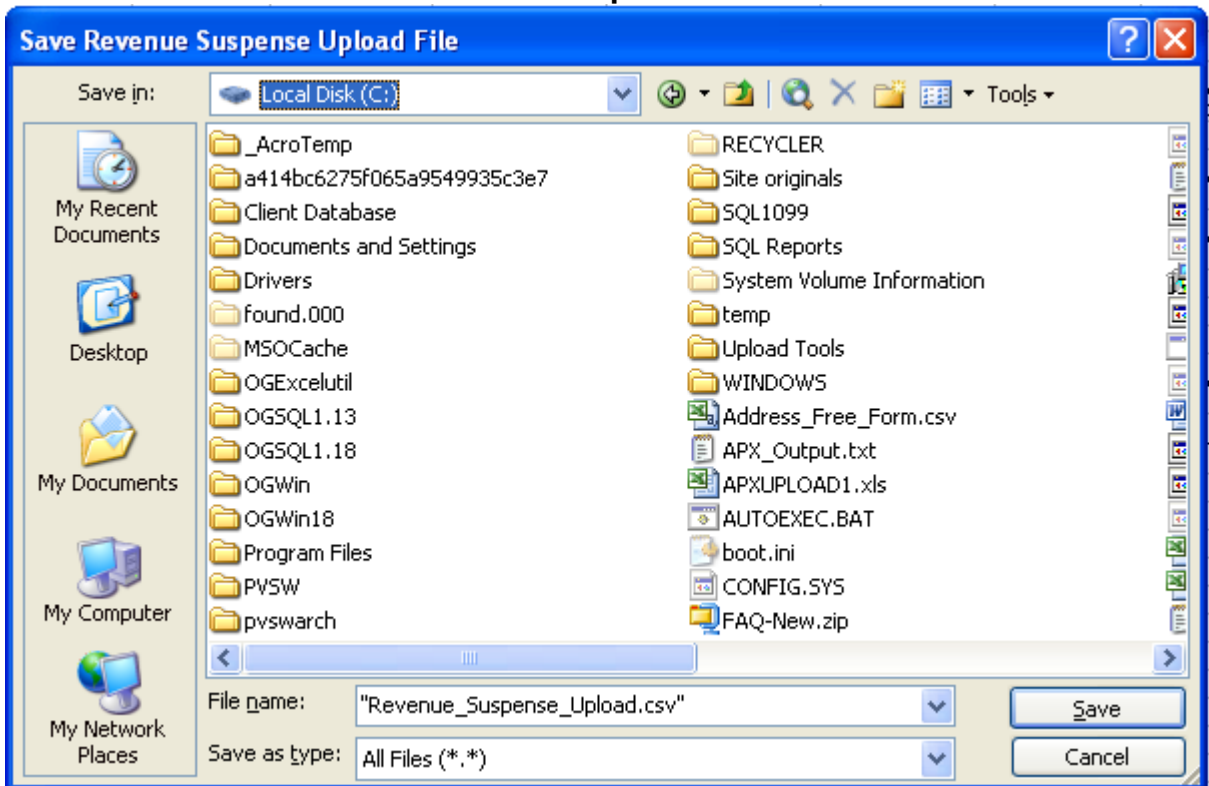
Please provide a valid Owner Name between 3 and 30 characters long.

- Correct any errors and click the **Check Data** button again. Repeat as necessary until all errors have been corrected.
-
- When no errors are detected, you will see a dialog box that allows you to save the text file. Click the button next to the file name and navigate to the directory where you would like to save the file:

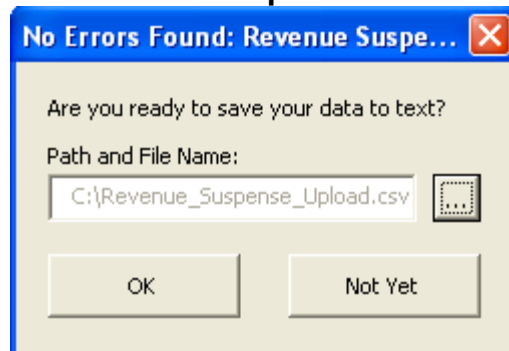
Step 1



Step 2

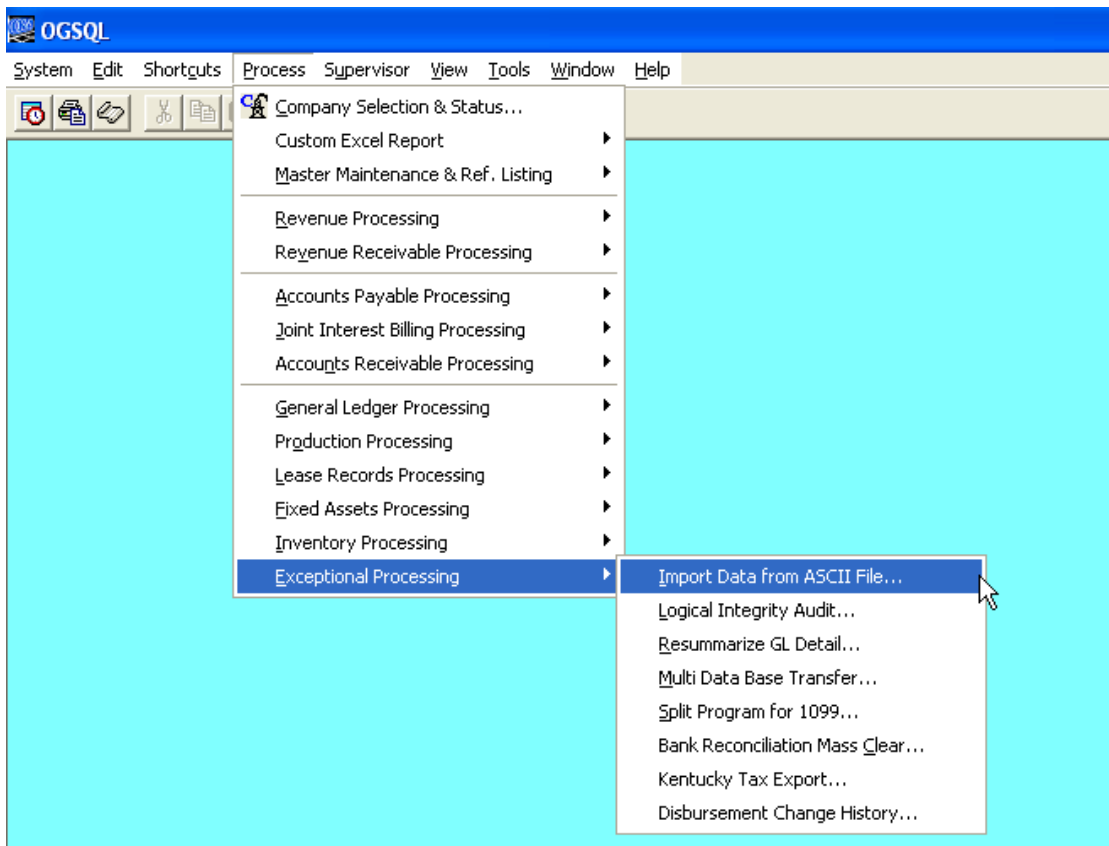


Step 3



- **Back up your data folder.**

- Navigate to **Process – Exceptional Processing – Import Data from ASCII File....**



- Select **Owner Revenue Detail**, verify the path and file name of the upload file, and click on **Import**.

<input checked="" type="checkbox"/>	Owner_Revenue_Detail	C:\Owner_Revenue_Detail.csv	...
<input type="checkbox"/>	Payment_Method_Entity	C:\OGSQL1.13\OGSQL\DemoSys\Import\Payment_Method_Entity	...
<input type="checkbox"/>	Payment_Method_Entity_Benefi	C:\OGSQL1.13\OGSQL\DemoSys\Import\Payment_Method_Entity	...

- Review the OGSQL report that is generated for any errors.